

MASTERSCREEN™ PULP FRACTIONATOR

The Pulmac MasterScreen™ is a fully automatic device designed to mechanically separate fibres from contaminants, including stickies and shives. After separation with the laser-cut precision screen plates the contaminants are deposited directly onto a filter paper or into a filter cup.

For shives, it allows you to pinpoint problems that occur in areas such as digesters, cleaners, refiners, grinders and screens.

For stickies it allows you to pinpoint problems that occur in repulpers, cleaners and screening.

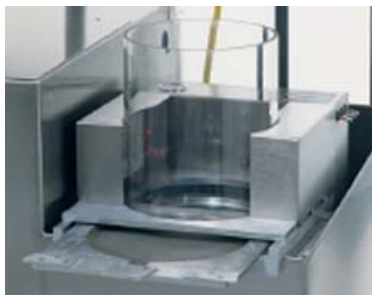
This data will allow you to reduce the frequency of dirt, shives or stickies in the final product, leading to increased profitability.

The precision, reproducibility and speed make the MasterScreen™ in many applications the industrial standard for fast and frequent screening in production and R&D.

The unit screens up to 100 grams (oven-dried equivalent) sample, depending on the pulp quality.

The rejects are washed out at the end of the passage of the screen chamber and distributed evenly on a filter paper and extracted for sticky analysis or another evaluation method.

Quantifying the rejects can be done with our Spec*Scan system (see leaflet 4.07).



Autofilter speeds results of test



Features

- Rapid results : displays in less than 10 min
- Fully automatic drainage, ± 10 min with 50 g ODE
- Laser-cut precision screen plates available in two standard sizes : 100 or 150 micron
- CE labeled European model
- Autofilter :
 - for quick deposit of contaminants
 - air mix offers even distribution on a 20 cm filter paper
 - cartridge allows easy removal & replacement of filter display
 - vacuum system removes water automatically
- Feed tank mixer-motor ensures uniform consistency delivered to screening chamber
- Programmable controller allows multiple test methods

Physical specifications

Dimensions

89 x 84 x 203 cm (WxDxH)

Net Weight

121 kg

Options

- Laser-cut precision screen plates in special dimensions : 75, 125, 175 or 200 micron
- Model MasterScreen XLQ (see leaflet 5.15B)

Standards

TAPPI T-274

Requirements

- 31 liters per minute of potable filtered water
- 19 mm NPT male fitting for water supply
- 38 mm NPT male fitting for drain
- Power supply 220 V, 50/60 Hz
- Compressed air 300 l/min at 425 kPa
- 6.35 mm slip fitting for air supply

Repeatability

Operators in mills have obtained stickies repeatability of $\pm 15\%$ and shive repeatability of $\pm 5\%$ at the 95 % confidence level.

“Partners in Quality”