

SPEC*EDGE

Spec*Edge is a scanner-based image analyser for measuring the quality of paper edge, size and hole parameters.

It was developed in cooperation with members of the paper manufacturers industry to give an accurate and non subjective means to measure the quality of the cut sheet at the slitter.

This system was designed so that the slitting machine operator can with one touch of a mouse button, know whether the sheets are cut within specification.

Using Spec*Edge, the technician can tell at a glance if the paper size, shape, curvature, serration, hanging fibers, hole horizontal & vertical position and diameter are correct.

The system even tells them if their cutting operation is marginal, alerting them to make adjustments before making bad cuts.

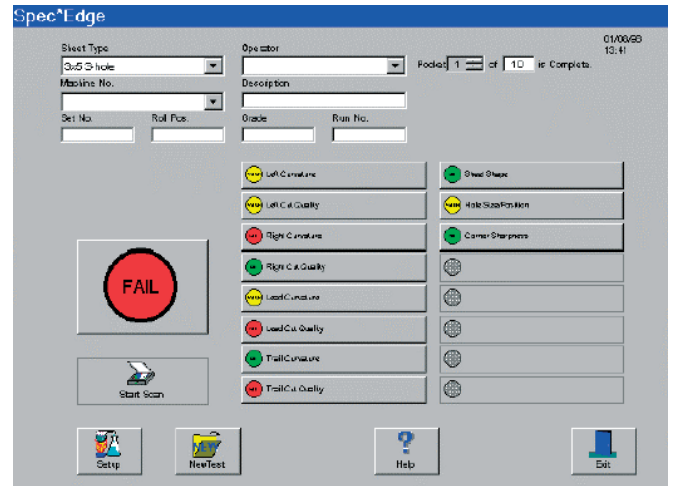
While the system is giving the operator valuable information, the system is also providing the engineering department with numbers that can give them trend information that is useful for predicting machine adjustment and cutter maintenance requirements.

The system can be set-up to measure compliance with XEROX standards for paper cut quality.

Measures sheets up to 28 x 43 cm DPI resolution or measuring at 0.036 mm.

Operation

After entering sheet specifications into the system, the operator simply places a sheet on the scanner glass and presses the "Start Scan" button with the mouse button. After the scan is complete and the data analysed by the system, the screen portrays the results.



Features

- A cut paper quality measuring system
- This PC and document scanner based system uses the accuracy of digital measurement to accurately analyse the quality of cut paper sizes 7.6 x 12.7 cm through 21.5 x 28 cm, 21.5 x 35.5 cm up to 28 x 43 cm

Edge quality measurements

- line - sheet size & shape
- curvature - deviation from edge center-line
- serration - cut sharpness and hanging fiber count

Sheet measurements

- size - average length and width
- shape - corner angles (squareness) and folded corners (sharpness)

Hole measurement

- (1 to 10 holes) - horizontal and vertical location, hole diameter

Standard system

The standard system includes :

- Spec*Edge 2000 software
- P-166, 128 Mb RAM, PC with 14" monitor running Windows NT or 95/98
- UMAX Mirage II 700 dpi large flat bed scanner that will measure up to an 28 x 43 cm sheet

"Partners in Quality"