

LABORATORY BEATER

type VALLEY

The Valley laboratory beater is used for pilot studies of pulping and blending under standard conditions of pulps, papers and boards. It is used in quality control and R&D.

This equipment beats successfully most types of pulps, from short fibers coming from hardwood like eucalyptus to long fibers coming from softwoods like pine.

The closed beating loop driven by the refiner itself ensures that all the pulp is refined homogeneously while it is circulating throughout the beater.

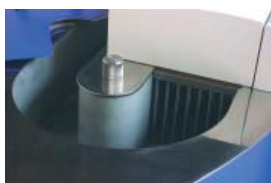
The beating roll is driven by a rugged & compact gearmotor controlled by a frequency inverter, which ensures a standard relative cutting speed of 5 m/s between flybars and bedplate bars.



model VB-21

Features

- Beater tub, beating roll, flybars, bedplate bars and working table are made of stainless steel
- Pressure between beating roll and bedplate is accurately adjusted by exclusive integrated pneumatic drive and load cell system for measuring force applied on bedplate assembly
- Standard relative cutting speed of 5 m/s between flybars and bedplate bars with minimal maintenance requirements
- Quick-operating clamp system enables easy access for regular inspection, sharpening & cleaning of the bedplate assembly
- Lower collection point with stainless steel ball valve ensures easy collection of beaten pulp as well as easy drainage of washing water from the beater's tub during regular cleaning jobs
- Rugged supporting structure
- Programmable digital countdown timer and digital indication of the force applied on the bedplate, of the rotation of beating roll and of the temperature of beaten pulp



Physical specifications

Dimensions

120 x 85 x 110 cm (WxLxH)

Net Weight

450 kg

Options

- Filter for water model GS200
3 l/min according to ISO 14487

Standards

ISO 5264/1, TAPPI T-200

Performance data

Capacity

360 g (O.D.)

Tub capacity

23 l

Contact force between roll and bedplate (adjustable)
standard force: 105 N

Rotation of beating roll (adjustable)

standard speed: 500 rpm

Power supply

220 V, 60 Hz, 1.5 kW, single phase

“Partners in Quality”